

INFINITI COMFORT COMPRESSION BACK BRACE

Dual Handle Pulley System -XS thru 2XL (18"– 60" circumference)



The Infiniti Comfort Compression Back Brace comfortably provides both superior compression and stabilization

- Lightweight breathable belt provides extreme abdominal comfort and support
- Flexible pulley system enables a contoured and conforming fit for any body type
- Provides equalized high compression and desired comfort adjustment for standing and sitting
- Easy to use dual pulley system promotes effortless high compression, even for individuals with muscle weakness or arthritic hand issues
- Ideal brace for athletes who experience lower back pain and need additional support

Product Number	Size	Waist Circumference
B620-XS	X Small	18"– 25"
B620-S	Small	26"– 32"
B620-M	Medium	33"– 39"
B620-L	Large	40"– 46"
B620-XL	X Large	47"– 53"
B620-XXL	XX Large	53"– 60"

Measure the circumference of waist to determine the correct brace size. If you fall between sizes, choose the smaller size.

The Infiniti Comfort Compression Back Brace utilizes a revolutionary dual pulley system that targets lower back pain. This dual pulley system, provides maximum comfort and fit, allowing for equalized compression throughout the brace.

Indications include but are not limited to:

- Mild low back pain, sprain and strain pain relief.
- Need for superior support for your lumbar area.
- Chronic low back pain
- Helps to prevent possible injury caused by everyday activity



Easy to use flexible pulley system for maximum comfort and fit.

* Medical advice should be sought on the appropriateness and the condition under which any given spinal bracing system should be utilized.



PROTOSTHETICS
3D PRINTED PROSTHETICS & ORTHOTICS

Protosthetics
617 4th St N, Ste. 1
Fargo, ND 58102
contact@protosthetics.com
(701) 478-2001

INFINITI COMFORT COMPRESSION BACK BRACE

Dual Handle Low Effort Pulley System

For Proper Fit Every Time:



Center back panel on the spine.



Wrap the left side to the front, positioning the front panel.



Then wrap right side on top of the left panel to close and attach in front.



Pull dual pulley handles out and away to desired compression and support.



Place each handle on the fabric for a secure fit.



Adjust tension for sitting or standing.

For a consistent fit, make sure you follow these easy steps each time you apply the brace.



Initially align pulley handle to the side of the brace prior to each fitting.



Extend or pull the brace completely out prior to each application.

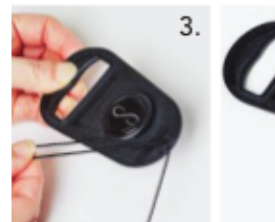
To Shorten the Length of the Nylon Cord on the Pulley Handle:



1. Detach the cord from the front clip



2. Pull the cord away from the 360 degree groove.



3. Wrap the cord around the 360 degree side groove clockwise

4. Reattach the cord to the front clip



Care Instructions: Hand wash in warm water, rinse well, towel and air dry completely.



PROTOSTHETICS
3D PRINTED PROSTHETICS & ORTHOTICS

Protosthetics
617 4th St N, Ste. 1
Fargo, ND 58102
contact@protosthetics.com
(701) 478-2001